

Gunpla Building

Presented

By

Those Gundam Guys

What's this all about?

- Introduction – who are Those Gundam Guys
- Some advanced techniques
- Gunpla Builders World Cup (I want a free trip to Japan!)
- Southern California Gundam Model Competition (HUGE So. Cal based gunpla competition)
- Questions about building Gunpla
 - Basic building skills
 - Advanced building skills
 - Tools
 - How to <insert part A into slot B>



THOSE
GUNDAM
GUYS

Present the Fifth Annual
GUNDAM
MODEL COMPETITION
SCGMC
SOUTHERN CALIFORNIA

Special Theme
“1/144 city diorama”

LIVE DEMOS - VENDORS - RAFFLE PRIZES
SATURDAY - NOV 14 - 9am to 4pm

Fullerton Community Center 340 W. Commonwealth Ave., Fullerton, CA 92832 **PARKING IN REAR**

GENERAL ADMISSION : \$8 (INCLUDES 1 MODEL ENTRY - ADDITIONAL ENTRIES \$1 PER MODEL)

THOSE GUNDAM GUYS.ORG facebook.com/thosegundamguys

Reasons not to build drunk...



HAHA, you wanna do this now don't
ya?



Those Gundam Guys

- Dan Salas
- Angel De La Cruz
- Michael Wine
- Clement Eng

**Hey Ladies!
I'm SINGLE!**



5 minutes, almost ready to build!



Dan Salas



Angel De La Cruz

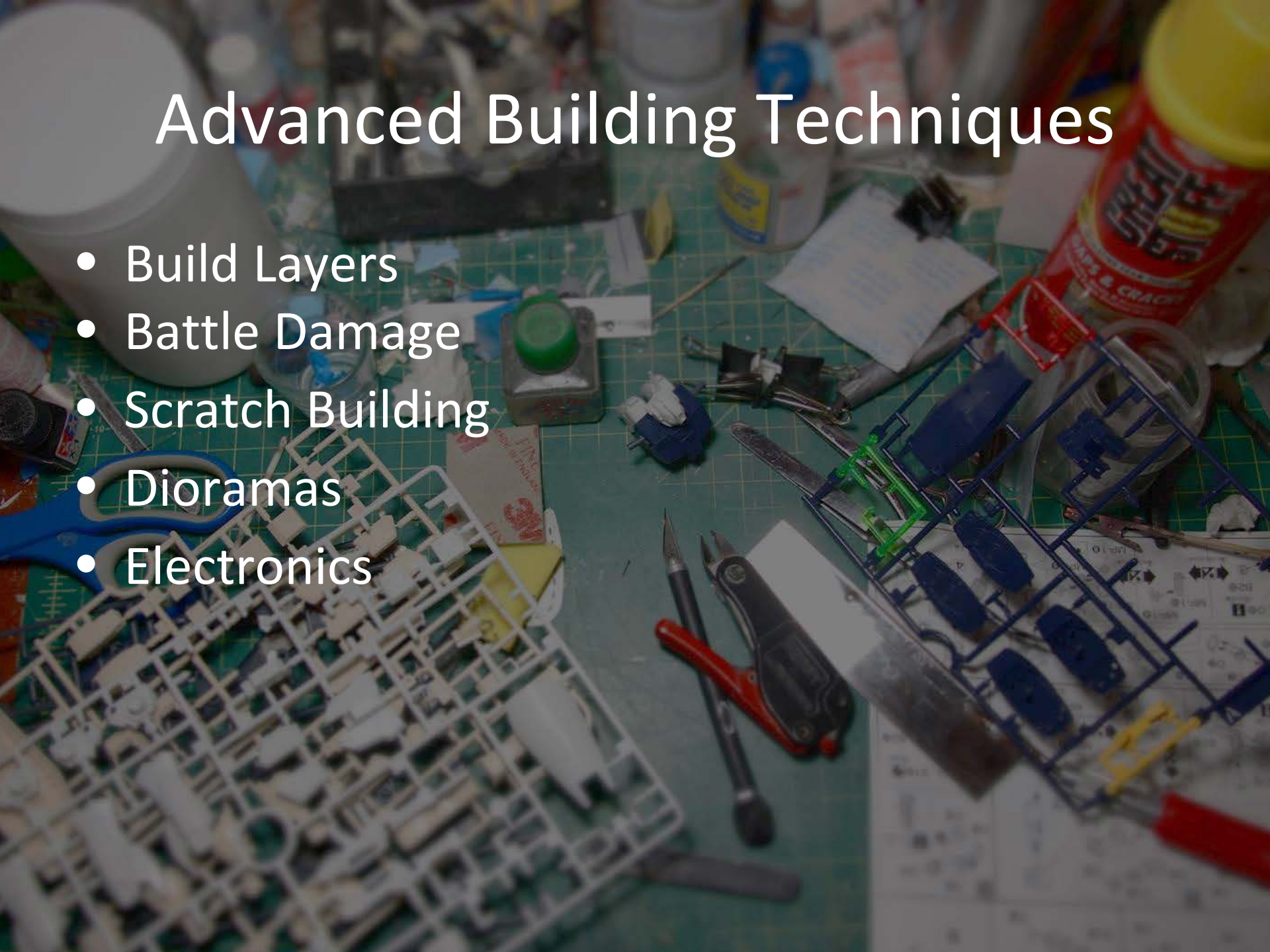


Michael Wine*



Advanced Building Techniques

- Build Layers
- Battle Damage
- Scratch Building
- Dioramas
- Electronics



How we typically build

Basic Build Painting Steps

Final Clear Coat (Gloss, Flat, Semi gloss, etc) to seal in pastels

Optional: Pastel Weathering (Previous layer must be flat coat)

Final Clear Coat (Gloss, Flat, Semi gloss, etc)

Optional: Filter or fade (same type of paint as panel line paint)

Panel Line Wash (must be different paint type than previous layer)

Gloss Clear Coat to Seal Decal (Lacquer or Acrylic)

Decal Application + Decal Setter/Softer

Gloss Clear Coat (Mr Super Clear Gloss)

Final Coat (Pre-shading, Lighter Tone)

Base Coat (Pre-shading, Darker Tone)

Primer (Mr Surfacer)

Bare Plastic (original kit color)

The layers are important!



For REAL!



Look what I picked up at Home Depot



Battle Damaging



Scratch Building: Dan Salas

<http://funakatown.com/> 34 Page Scratch building manual



Building Gunpla

A tutorial by Funaka

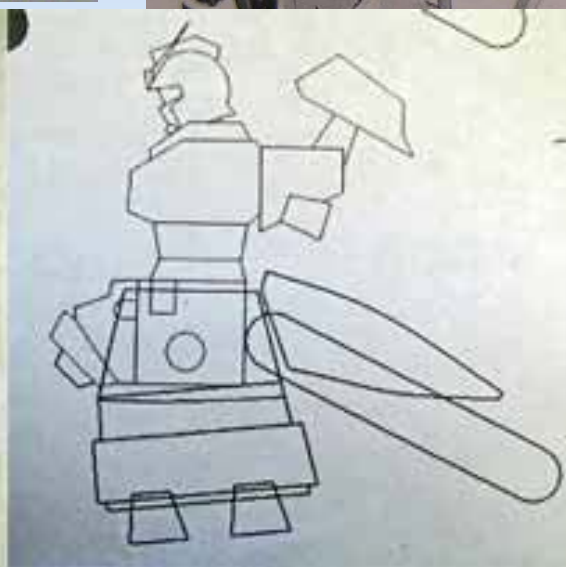
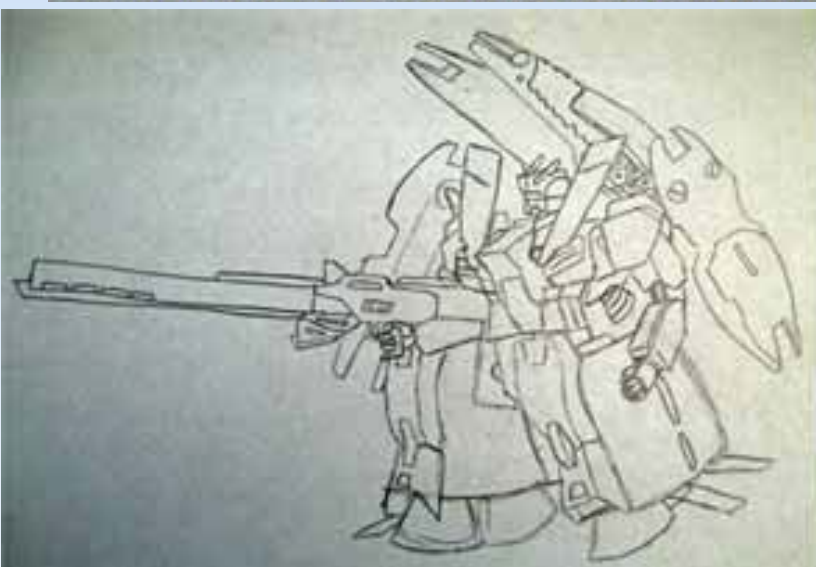
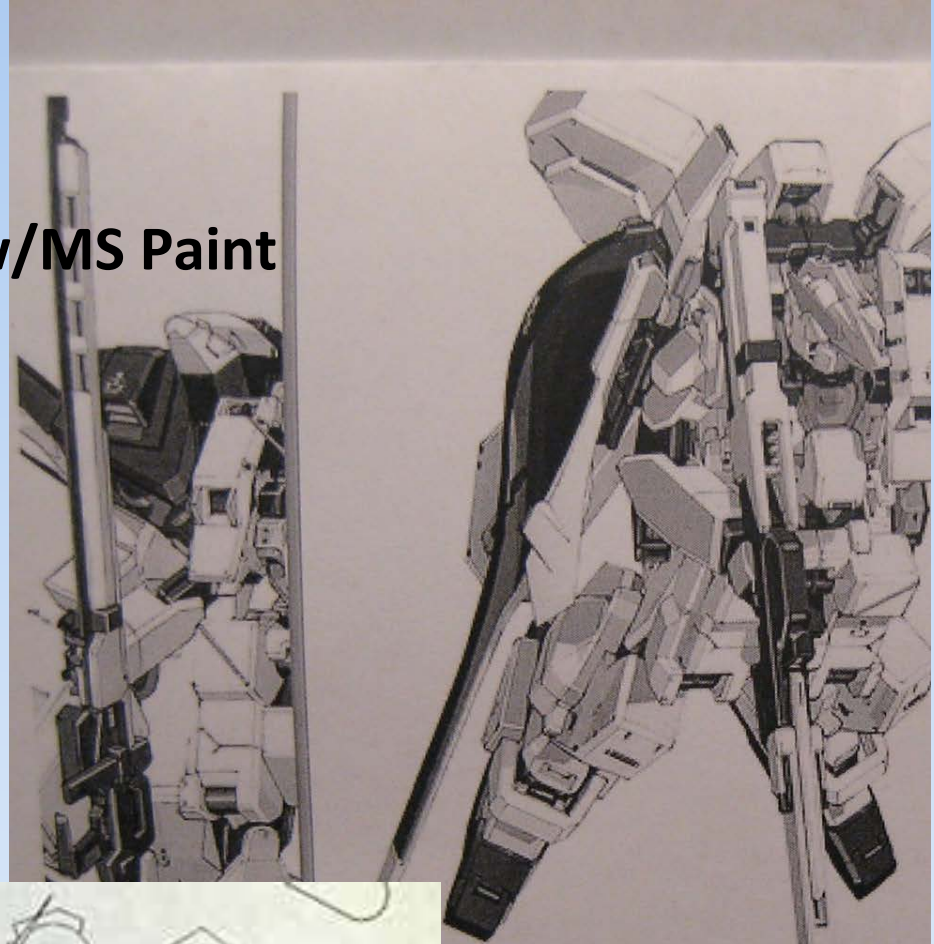
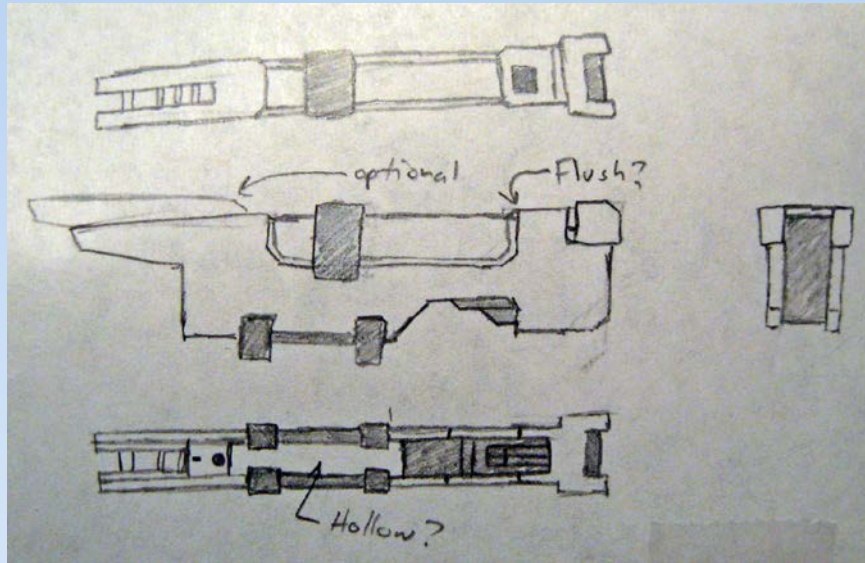


Funakatown.com





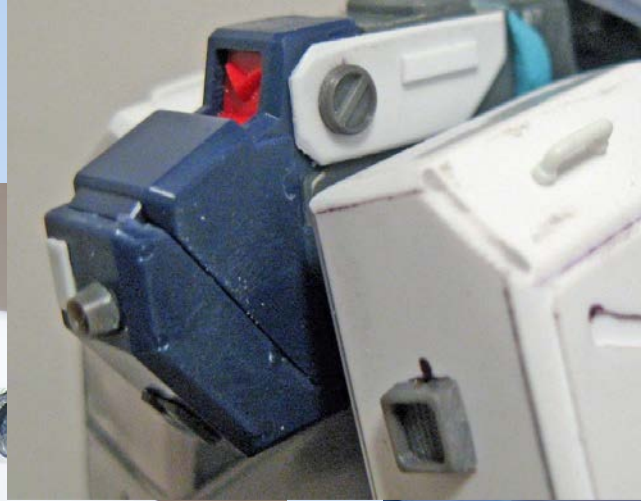
- Research
- Sketching
- Adobe Illustrator/Corel Draw/MS Paint



- Plastic Sheets
- Metal Ruler/Cutting Sheet
- Building Box



- Putty, Sand, Repeat
- Koto Parts, Spark Kit Parts, Electronic pins
- Lengthening with plastic sheets



Mods: Angel





Dioramas: Michael Wine

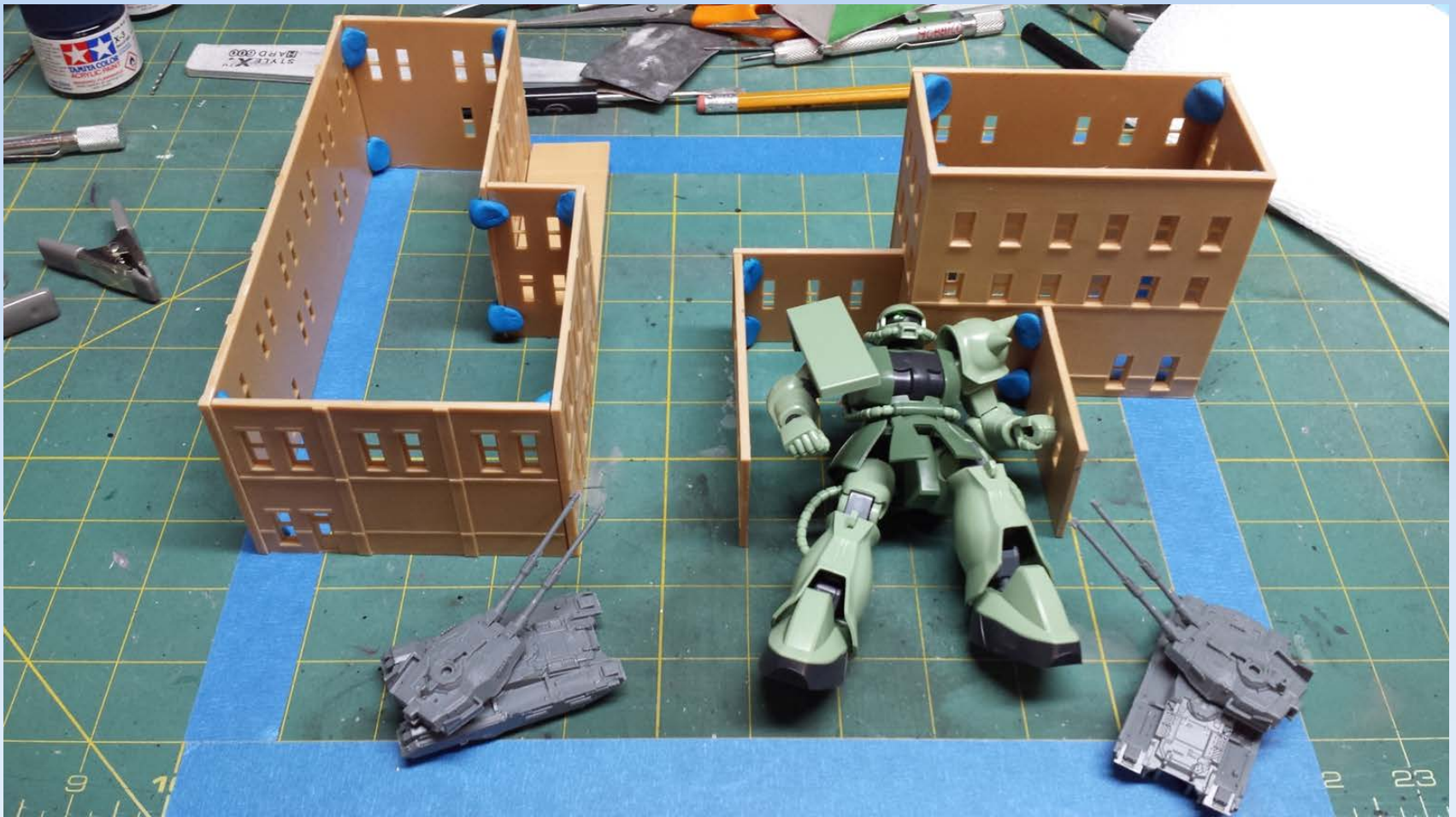
- Planning
- Major Players
- Settings
- Its all in the details



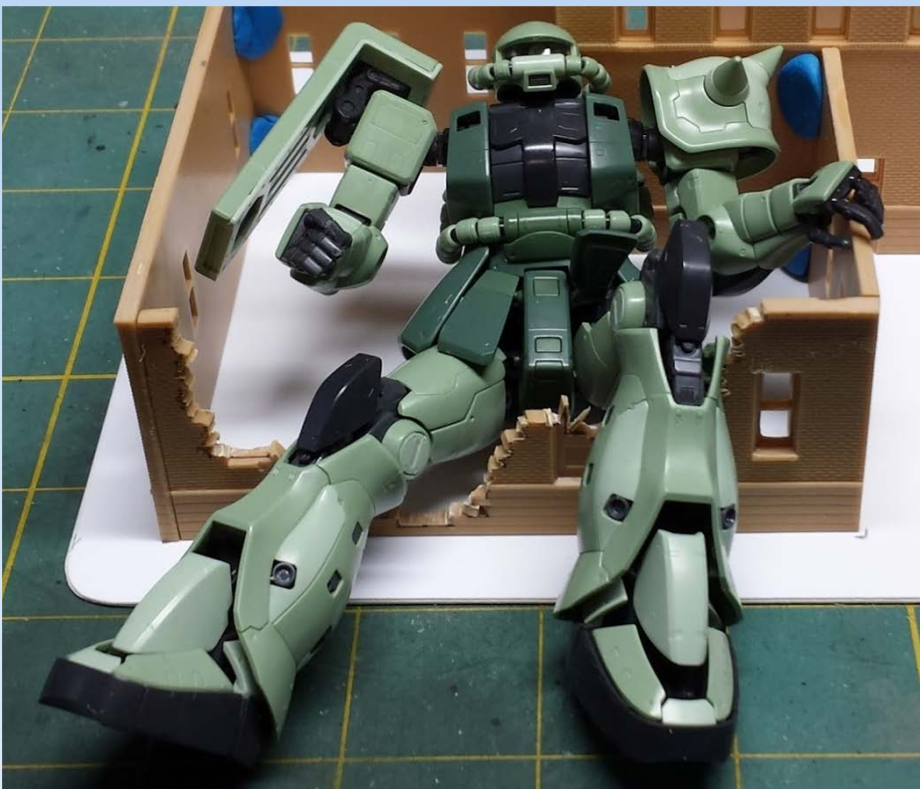
Planning – cause sometimes, things just don't fit...



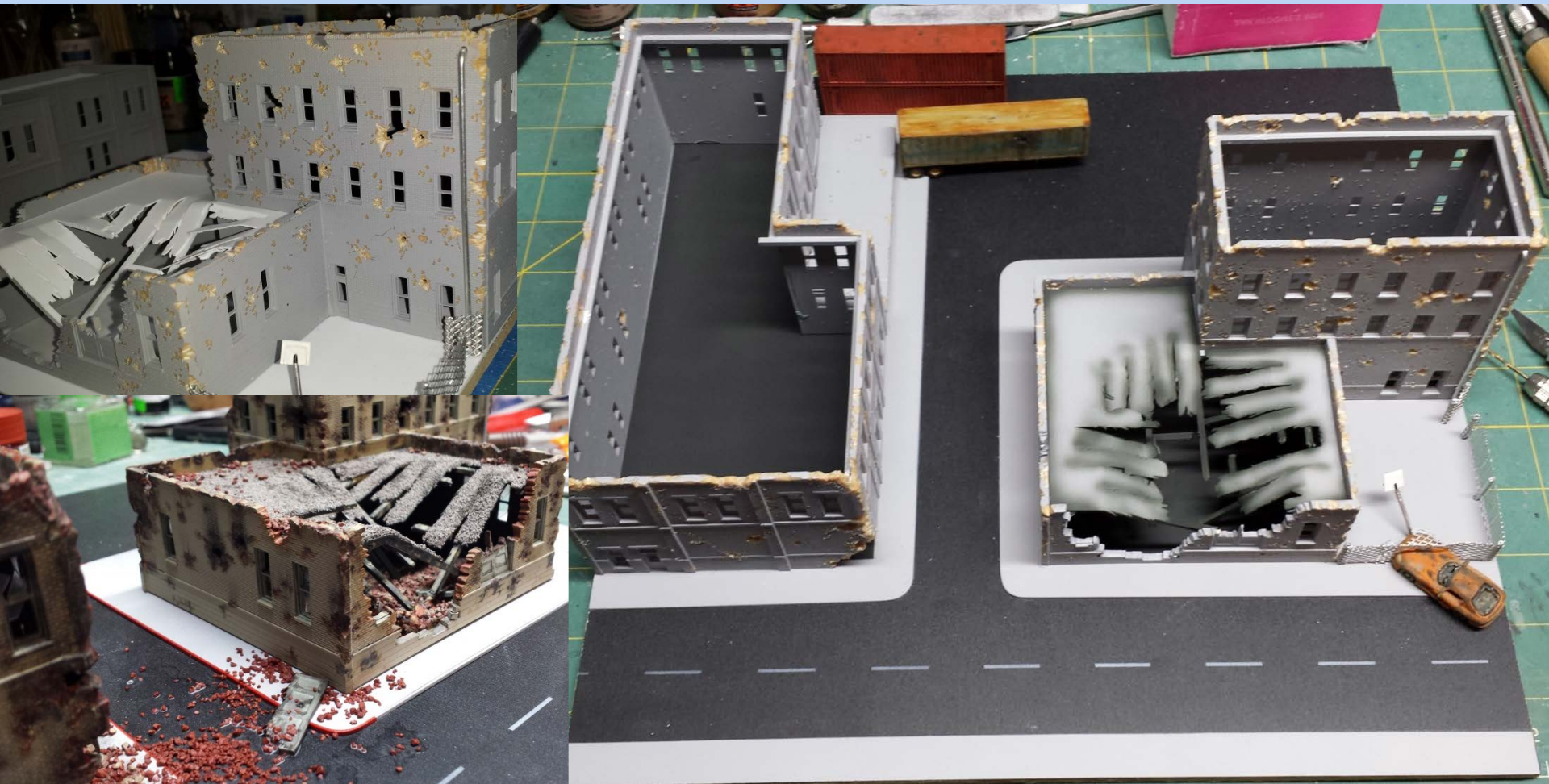
Proper Planning



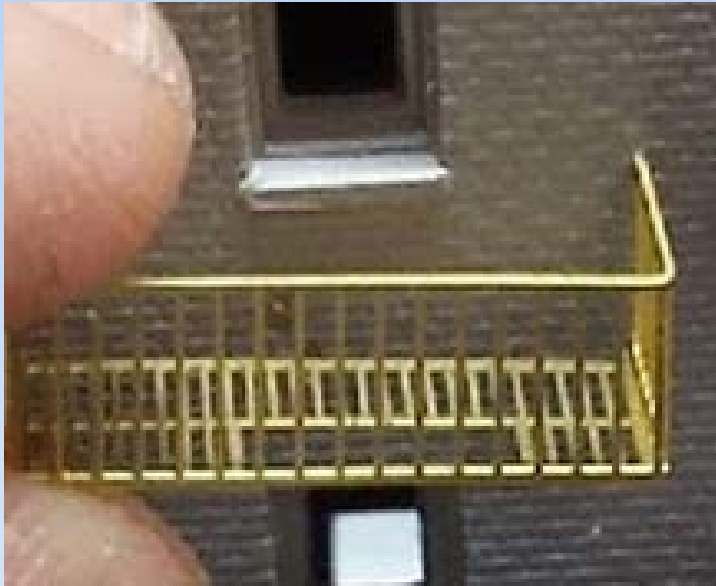
Major Players



The Setting



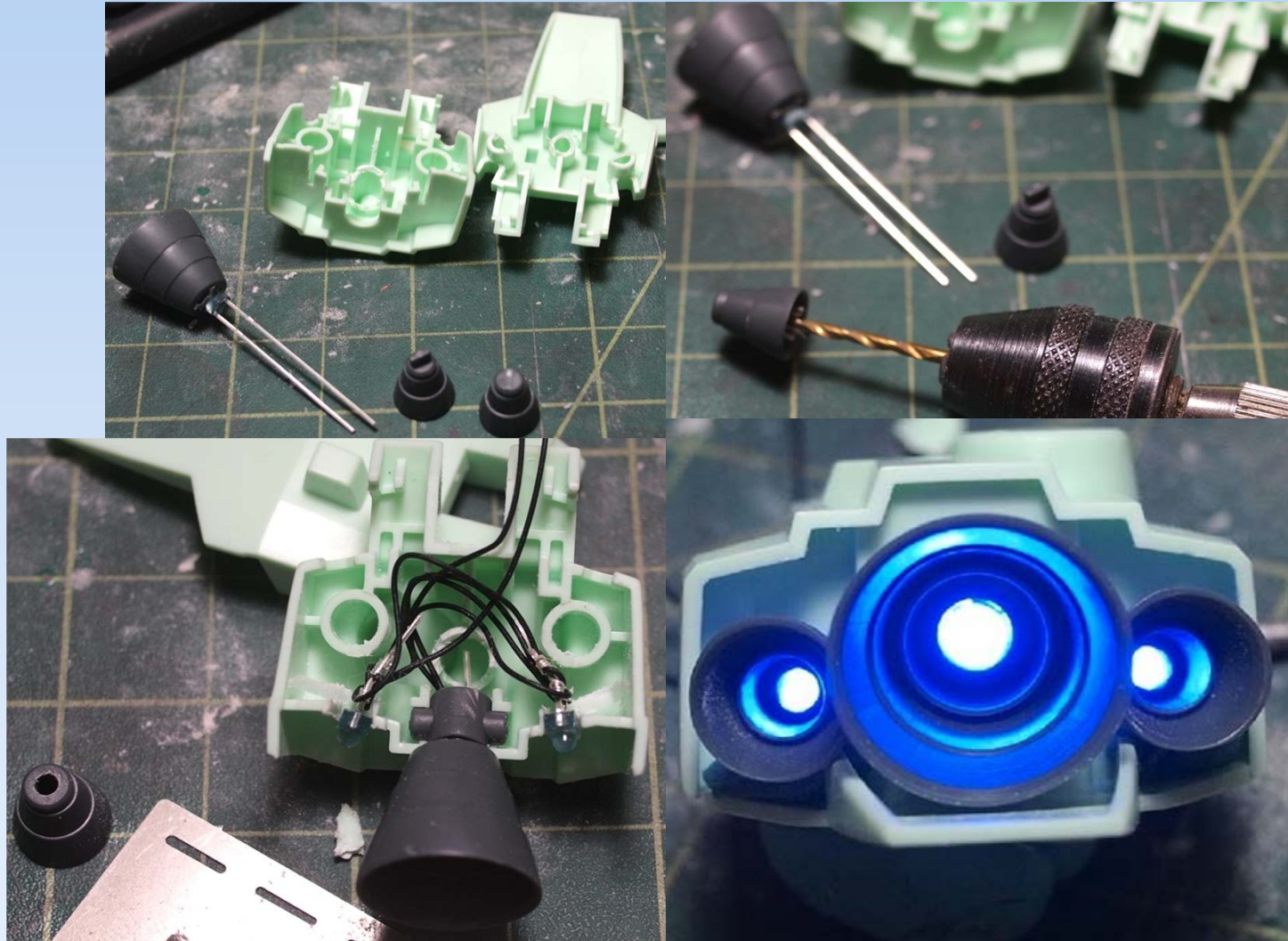
The Details



Electronics: Clement

- LEDs
- Magnetic Switches
- Microprocessors

Simple LED: Drill, glue LED, wire, done



Complex LED: Resin Cast



Microprocessor Controlled LED



GMs Can't Swim



Gunpla Builders World Cup

- What is GBWC?
- Dan's Experience in 2010
- Clement's Experience in 2011
- Angel's Experience in 2012
- How does one win GBWC?



Southern California Gundam Model Competition!

- What is SCGMC
- Categories
- Themes
- Live Demos (hands on airbrushing)
- Awesome T-Shirts!



THOSE
GUNDAM
GUYS

Present the Fifth Annual

GUNDAM
MODEL COMPETITION
SCGMC
SOUTHERN CALIFORNIA

Special Theme

“1/144 city diorama”

LIVE DEMOS - VENDORS - RAFFLE PRIZES
SATURDAY - NOV 14 - 9am to 4pm

Fullerton Community Center
340 W. Commonwealth Ave., Fullerton, CA 92832

PARKING IN REAR

GENERAL ADMISSION : \$8 (INCLUDES 1 MODEL ENTRY - ADDITIONAL ENTRIES \$1 PER MODEL)

THOSE GUNDAM GUYS.ORG facebook.com/thosegundamguys

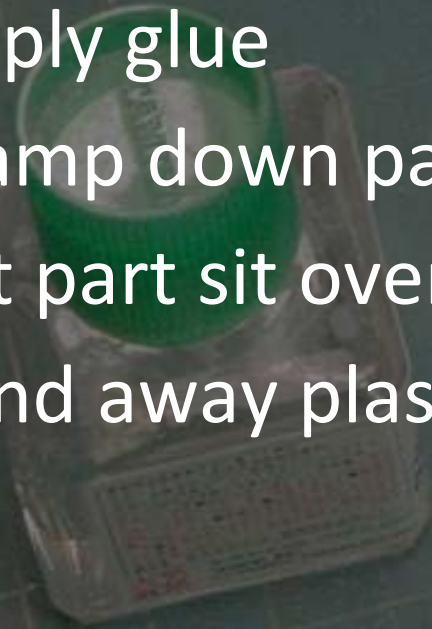
Chicks LOVE Big Robots...



Questions About Basic Techniques

Seam Lines

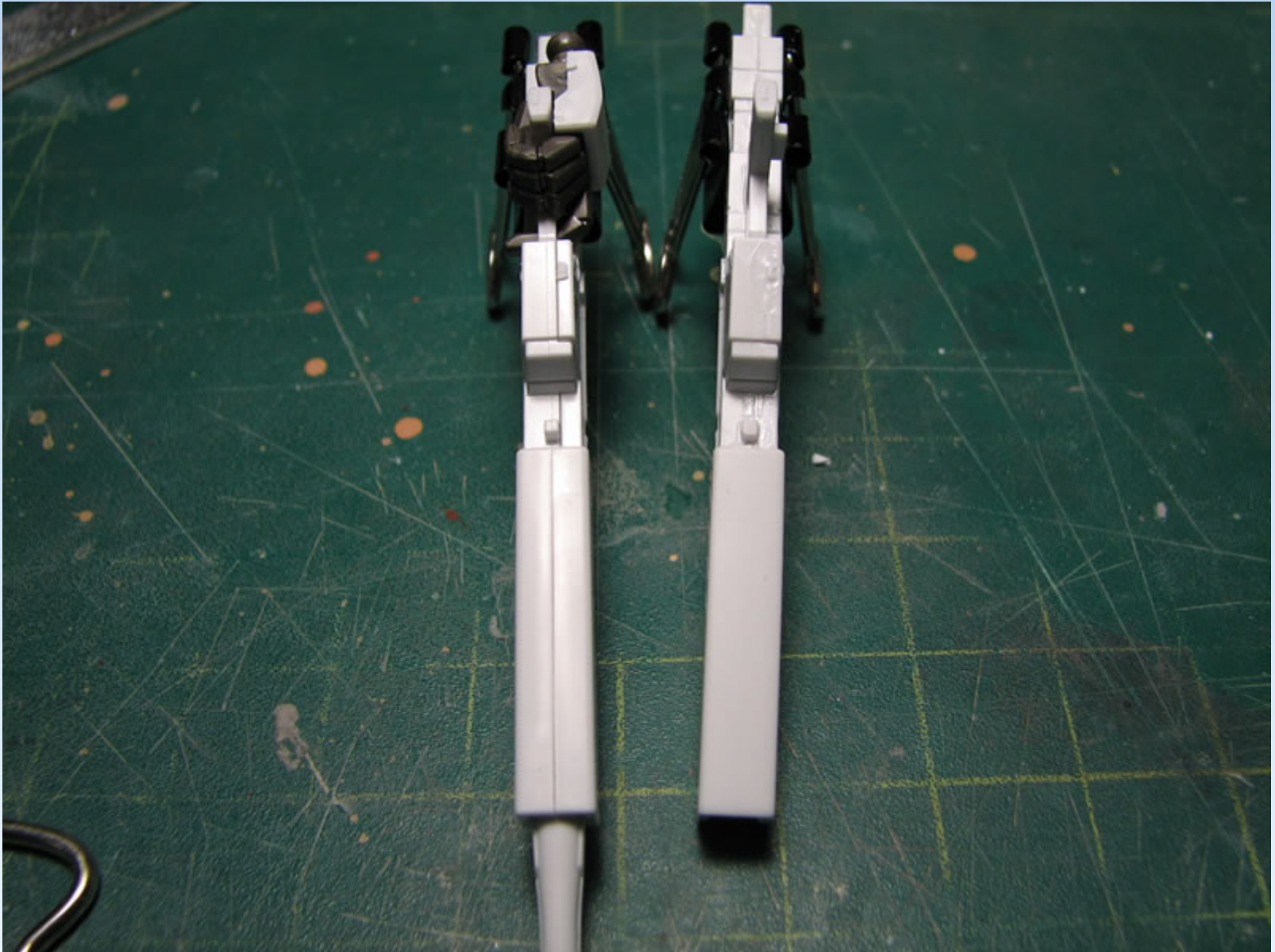
- Solvent Glue
- Apply glue
- Clamp down part
- Let part sit overnight for full cure
- Sand away plastic ooze



Plastic ooze



Sand away the ooze



@##!&&* *!! It BROKE!



Creative masking and gloss vs flat



Shameless Plug!!!



THOSE
GUNDAM
GUYS

Present the Fifth Annual

GUNDAM
MODEL COMPETITION
SCGMC
SOUTHERN CALIFORNIA

Special Theme
“1/144 city diorama”

LIVE DEMOS - VENDORS - RAFFLE PRIZES
SATURDAY - NOV 14 - 9am to 4pm

Fullerton Community Center 340 W. Commonwealth Ave., Fullerton, CA 92832 **PARKING IN REAR**

GENERAL ADMISSION : \$8 (INCLUDES 1 MODEL ENTRY - ADDITIONAL ENTRIES \$1 PER MODEL)

THOSE GUNDAM GUYS.ORG facebook.com/thosegundamguys

Gunpla Resources

- <http://gamerabaenre.com>
- <http://funakatown.com>
- <http://thosegundamguys.org>
- <http://robots4less.com> (PHYSICAL GUNPLA STORE!)
- Cool SCGMC 2015 T-Shirts (come talk to us after the panel!)

